

RFM

THE MIDLANDS MART

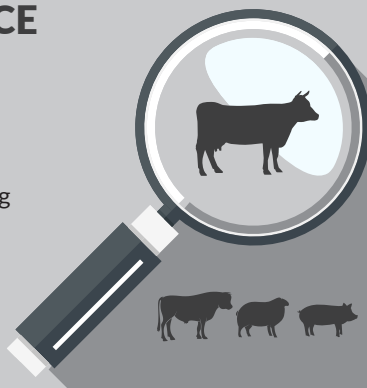
— RUGBYFARMERSMART.COM —

The Charolais Pavilion, Avenue M, Stoneleigh Park,
Kenilworth, Warwickshire CV8 2RG
02476 697731 | www.rugbyfarmersmart.com | 43/139/8013
Office hours: Monday to Friday - 9.00am - 5.00pm
Opening Time: Gates open at 5.30am until further notice

MARKET REPORT FOR MONDAY 25TH SEPTEMBER 2023

MARKET AT A GLANCE

Prime Steers to 350p/kg & £2147
Prime Heifers to 320p/kg & £1984
Cows to 220p/kg & £1694
Prime Bulls to 260p/kg & £1976
Prime Lamb SQQ 258p/kg (1247 Avg
£116.50)
Prime Lambs to 310p/kg & £169
Ewes to £158 (1365 Avg £97)



FRIDAY 29TH SEPTEMBER
ANNUAL RAM FAIR INCLUDING BREEDING SHEEP

Catalogues & Entry Forms available by post, email or on the website
www.rugbyfarmersmart.com | admin@rugbyfarmersmart.com

CATTLE: 94 FORWARD



37 Steers
28 Heifers
5 Bulls
24 Cows

All Classes dearer on the week with more orders ringside to be fulfilled .

Top price today in the Steers went to once again our very own Pete Jarrom for a smashing shapely British Blue Steer weighing 572kilo and going for 350ppk.

This was followed by BJ & IS Wain with some lovely Limousin Steers at 319ppk and 318ppk

In the Heifers DTP & PA Walters topped at 320ppk with a Limousin x Heifer, closely followed by once again BJ & IS Wain with another Limousin Heifer at 319ppk

In the lump with a Limousin Steer weighing 686 kilo, £2147 was DTP & PA Walters followed by RW & HER Trivett.with a Limousin at £2130

In the lump for the Heifers was again RW & HER Trivett with a Limousin Heifer weighing 668 kilo and made £1984 closely followed by DTP & PA Walters

In the Cows a Simmental topped in the PPK and PPH from Greyhound Estates weighing 770kilo and 220ppk in the lump £1694

Auctioneer: Emma Coupland

**PLEASE COULD ALL VENDORS BOOK IN STOCK,
EITHER BY A QUICK CALL, TEXT OR EMAIL THANK YOU!**

Office: 02476697731 | Email: admin@rugbyfarmersmart.com | Tom: 07774723758

Photograph Request

Rugby Primestock Society are after any old pictures from past Rugby Primestock Shows for this year's 50th anniversary.

please could copies be emailed to Sophie admin@rugbyfarmersmart.com or sent to the market office. We can scan the photos and return the originals.

STEERS & BULLS

Top prices per Head				FA
Limousin x	686kg	£2147	DTP & PA Walters	Y
Limousin x	670kg	£2130	RW & HER Trivett	Y
Limousin	722kg	£2108	DTP & PA Walters	Y
South Devon	774kg	£2020	Lee & Son	Y
Limousin x	692kg	£2006	Tillbrook Farm	Y

Top prices per Kilo				
British Blue	572kg	350ppk	P M Jarrom	Y
Limousin x	670kg	318ppk	RW & HER Trivett	Y
Limousin x	686kg	313ppk	DTP & PA Walters	Y
Limousin x	606kg	310ppk	Tillbrook Farm	Y
Limousin x	592kg	304ppk	Tillbrook Farm	

HEIFERS

Top prices per head				FA
Limousin x	668kg	£1983	RW & HER Trivett	Y
Limousin x	622kg	£1921	DTP & PA Walters	Y
Limousin x	622kg	£1921	DTP & PA Walters	Y
Limousin x	594kg	£1900	DTP & PA Walters	Y
British Blue	646kg	£1879	Freeman Farming	Y
Top prices per kilo				
Limousin	594kg	320ppk	DTP & PA Walters	Y
Limousin x	472kg	319ppk	BJ & IS Wain	Y
Limousin x	622kg	309ppk	DTP & PA Walters	Y
Limousin x	668kg	297ppk	RW & HER Trivett	Y
Charolais	586kg	296ppk	PC & RA Nichols & Son	Y

Len Eadon 1999-2022 Tribute page

<https://leneadon.muchloved.com/?fbclid=IwAR1QM9qsvxqscmyehDUuwJvjrbR4KICliDqyzwBdYBEAsDaB164bZn50g4>

COWS

Top prices per head Cows				FA
Simmental	770kg	£1694	Greyhound Estates	Y
Hereford	834kg	£1526	D J Hull & Partners	Y
Hereford	742kg	£1432	D J Hull & Partners	Y
Top prices per kilo				
Simmental	770kg	220ppk	Greyhound Estates	Y
Hereford	742kg	193ppk	D J Hull & Partners	Y
Simmental	580kg	186ppk	Leam Farm Partnership	Y

SPRING LAMBS: 1247 FORWARD SQQ 258 P/KG AVG £116.50



Prime Lambs

Meat keenly bid for with lesser fleshed lambs more common throughout the Sale. Averages may be down however the quality lacking with very few hard fed Lamb forward.

Top in the ppk went to our own WM Warner for 34.5 kilo Texel at 310ppk
Tillbrook Farm had nice Beltex Lambs and sold for 292ppk to 300ppk

Heavy Lambs weighing at 67 kilos for HL Goode & Son made £169 and again Tillbrook Farm with 60 kilo Lambs to £160

Auctioneer: Emma Coupland

PRIME LAMBS SQQ 258 p/kg

Per Kilo **under 45.5kg**

Texel	34.50kg	310ppk	W M Warner
Beltex	27.00kg	300ppk	Tillbrook Farm
Texel	40.00kg	298ppk	Lee & Son
Beltex	36.50kg	292ppk	Tillbrook Farm
Char	44.00kg	289ppk	N Sinden

Per HEAD

Char	44.00kg	£127.00	N Sinden
Texel	43.50kg	£121.50	DTP & PA Walters
Char	43.50kg	£120.50	N Sinden
Char	43.50kg	£119.50	N Sinden
Texel	42.50kg	£119.50	Pritchard Farms

Per Kilo **over 45.5kg**

Texel	47.00kg	291ppk	Humphrey Livestock
Texel	47.50kg	288ppk	Humphrey Livestock
Texel	45.50kg	286ppk	LG Russell & Son
Texel	47.00kg	284ppk	Humphrey Livestock
Texel	46.00kg	283ppk	Page Bros

Per HEAD

Char	67.00kg	£169.00	HL Goode & Son
Char	60.00kg	£160.00	Tillbrook Farm
Dutch Spot	56.00kg	£155.00	Amy Wright
Texel	59.00kg	£150.00	Memphis Tacy
Texel	55.50kg	£149.00	V R Phipps

****FAT CATTLE TIMINGS****
COWS 8:30AM
PRIME CATTLE 9AM

CULL EWES: 1366 FORWARD



Trade again holding its own with a larger show in here along with larger shows nationally. It would appear everyone is having a good tidy up ready for tupping time.
Meat and weight standing firm.

Cull Ewes today with JR Baxter & K Smith taking top spot with Charollais Ewes topping at £158
VJ Roots had some nice Continental Ewes at £150-153

PLEASE SEE THE WELFARE STATEMENT BELOW REGARDING THE CULL EWES

Auctioneer: Emma Coupland

EWES

Char	£158	JR Baxter & K Smith	Beltex	£147	G & E Livestock
Texel	£153	V J Roots	Cont	£147	CH Evans & Son
Beltex	£150	V J Roots	Suffolk	£144	Minshull Farms

WELFARE STATEMENT

Following a meeting with Warwickshire Trading Standards & the FSA on Monday we have been asked to highlight the Welfare Issues being reported from the Abattoirs regarding Cull Ewes. These mainly relate to MASTITIS & LAMENESS. Condition Score i.e being very thin.

Please remember that an animal must be fit for the intended journey, it should not be ill, injured or severely lame i.e. must be full weight bearing.

These sheep are being rejected at abattoirs around the Country

STORE LAMBS: 336 FORWARD



Store Lambs : 336 Forward

Nice show of lambs forward, many short term and a good ring of buyers there to ensure on a fast trade.

Good runs if sheep from WM Warner, DC Hancock, and Messrs GA Stanton & Sons

Top price to £104 today and averaging £88.14

Next sale.....Next Monday

Auctioneer Tim Webster



AUTO GATES LTD

Bridge Farm, Holt Lane, Ashby Magna, LE17 5NJ

Trevor 07498993897/01455 202791

Email: tjautogate@gmail.com

Fitted to new or existing gates, wood or steel automated.

Sliding, swinging or cantilever.

Sunday lairage is now open from 9am-3:00pm
Gates close 3:00pm **STRICTLY.**

SALES / LETTINGS / COMMERCIAL / FARM & RURAL
PLANNING & DEVELOPMENT / AUCTIONS

COLLECTIVE MACHINERY SALE - SAVE THE DATE

**HOWKINS &
HARRISON**
howkinsandharrison.co.uk

UPCOMING AUCTION

Collective machinery sale on behalf of Mr A Baughan & others.

Oak Farm, Upper Boddington, Nr Daventry, Northamptonshire, NN11 6DW.

ENTRIES ARE INVITED IN THE FOLLOWING CATEGORIES:

Tractors, telehandlers, diggers, trailers, vehicles,
arable, grassland & livestock machinery.

Together with: Excavators, dump trucks, mini diggers,
telehandler & loader attachments, bowsers, generators & agricultural requisites.

Plus: Livestock equipment, workshop equipment,
agricultural equipment & rural bygones.



For an Entry Form or more information please contact Gilly on 07921 511852.

To be sold by auction on Saturday 7th October 2023 at 10.30am.

TELEPHONE 01788 564746 / 07921 511852

EMAIL dispersal.sales@howkinsandharrison.co.uk

7-11 Albert Street, Rugby. CV21 2RX





Farm insurance, the way it should be

We're a family-run business and pride ourselves on forging long term relationships with our farming and agricultural clients. Covering the Midlands, South West and South East, we deliver an extensive range of farm, agri business and equine policies tailored to you.

Farm & Equine **01865 290915**

General **01865 844998**

 Follow us **@County_Farm**

www.county-insurance.co.uk/farms



Independent Insurance Brokers County Insurance Services Limited. Address and Registered Office: County House, Glyme Court, Langford Lane, Kidlington, Oxon OX5 1LQ. Authorised and regulated by the Financial Conduct Authority (FCA) (FRN: 597267). Company registered in England No. 08411634

Harvest Festival Day

at Leicester Racecourse

Apply for free tickets
through Sally

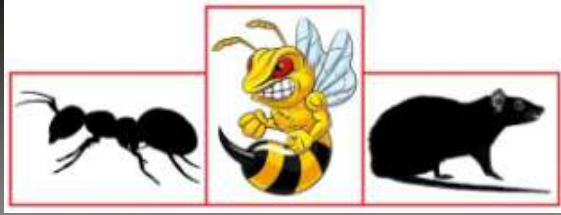
secretaryleicsrabi@gmail.com
07836511912

Tickets will be available to
collect on the gate on the day

Doors Open 12.15pm

Tuesday October 17th





RDB Pest Control

Reliable | Trustworthy | Fast | Effective
Competitive Prices

Ryan Brunt

07922 091 459

www.rdbpestcontrol.co.uk

Why You Should Choose Us

- ✓ Cater for Red Tractor and Farm Assurance Schemes
- ✓ Wide ranging experience on Farms with existing agricultural customers
- ✓ Member of Warwickshire Young Farmers
- ✓ Fully qualified - Level 2 RSPH in Pest Control
- ✓ Trustworthy and security vetted
- ✓ Prompt, reliable fast response

A selection of sites where I have experience:

Police Sites • Local Airport • Farms • Warehouses • Offices
• Industrial Estates • Food Premises • Private Houses
Country Estates • Building Sites • Local Councils • Schools •
Day Nurseries • Care Homes

FOR SALE

2017 ISUZU 2.5 D MAX
TOW BAR, GREEN 62,000 MILES
ONE OWNER £14,500
RICHARD 07802 845296

FOR SALE

COLLIE PUPS
READY TO GO & VACCINATED,
WELL BRED WORKING PARENTS
1 BITCH £300, 1 DOG £250
DENISE 07966505848

RFM

THE MIDLANDS MART

STORE CATTLE SALES 2023

OCTOBER 12TH & 19TH
NOVEMBER 2ND, 9TH & 23RD
DECEMBER 14TH



+

STORE LAMBS

CONTACT 02476697731 OR EMAIL ADMIN@RUGBYFARMERSMART.COM
TO BOOK IN YOUR ENTRIES

**FRIDAY
29TH
SEPTEMBER**

**ANNUAL RAM FAIR
SALE OF RAMS, BREEDING & STORE SHEEP
TO INCLUDE SHOW & SALE OF MAEDI VISNA
ACCREDITED RAMS**

**CATALOGUE AVAILABLE ON OUR WEBSITE SOON
WWW.RUGBYFARMERSMART.COM**

**CATALOGUE AVAILABLE ON OUR WEBSITE SOON
WWW.RUGBYFARMERSMART.COM**

**MACHINERY AUTUMN SALE
FRIDAY 27TH OCTOBER**

**CONTACT 02476697731 OR EMAIL
ADMIN@RUGBYFARMERSMART.COM
TO BOOK IN YOUR ENTRIES**



WE COVER SMALL FARMS, LARGE FARMS AND EVERYTHING IN BETWEEN



From sheep farmers to arable farmers.
Flower growers to poultry farmers.

NFU Mutual is proud to insure over 75% of UK farms with our Farm Select insurance. But we want more farms to benefit from great cover and local service. NFU Mutual has introduced Farm Essentials insurance – designed to meet the needs of smaller farms.

As your local agency, we are close by and can provide expert advice and hands-on support when you need it.

Call **Coventry Office** on **02476 444519**

NFU Mutual, 6 Eastwood Business Village,
Harry Weston Road, Binley Business Park,
Coventry, CV3 2UB



NFU Mutual
FARM INSURANCE

FOR SALE

5/600 Pheasant Poults 7 week old
1000 Partridge Poults 12 weeks old
All well feathered and healthy
contact: 01295 660245

T.A.R HIRE

FOR HIRE:

- 10 & 14 TON REAR MUCK SPREADERS
- 12 TON TRAILERS WITH SILAGE SIDES
- ROAD SWEEPER
- FLAT TRAILERS
- GRASS TOPPERS
- CONTRACT MUCK SPREADING SERVICES

CONTACT:

DAVENTRY (ROB) - 07801791212

HINCKLEY (ALAN) - 07802951179

FINISHING CATTLE? GROWING CATTLE? FEEDING SHEEP?

BERRYSTOCK
FEEDS



Do you want **HIGH PERFORMANCE, COST EFFECTIVE, FULLY ASSURED and COMPLETE FEEDS?** Then contact **BERRYSTOCK FEEDS:**

Tel: 01788 890320 E-Mail: john@berryfieldsfarm.co.uk Web: www.berrystockfeeds.co.uk

BERRYFIELDS FARM, DAVENTRY, NN11 8NP



THE MIDLANDS MART

RUGBYFARMERSMART.COM

FORTHCOMING SALES

**FRIDAY 29TH SEPTEMBER
ANNUAL RAM FAIR INCLUDING BREEDING SHEEP**

**Vendors who are wishing to sell stock
please feel free to contact:**

Tom Wrench - 07774 723758 Market Manager & Auctioneer

Tim Webster- 07437 101163 Auctioneer & Fieldsman

Emma Coupland- 07808 271218 Fat Cattle Auctioneer

Charlie Betteridge- 07760266701 Fieldsman

Nathan Shaw-07460120293 Yard Manager

who will gladly make

A FREE ON FARM VISIT & VALUATION



Follow us on social media:

Facebook & Twitter - @RFMMidlandsMart

Instagram - rugbyfarmersmartLtd